



KUARIO



All rights reserved. No parts of this work may be reproduced in any form or by any means - graphic, electronic, or mechanical, including photocopying, recording, taping, or information storage and retrieval systems - without the written permission of the publisher.

Products that are referred to in this document may be either trademarks and/or registered trademarks of the respective owners. The publisher and the author make no claim to these trademarks.

While every precaution has been taken in the preparation of this document, the publisher and the author assume no responsibility for errors or omissions, or for damages resulting from the use of information contained in this document or from the use of programs and source code that may accompany it. In no event shall the publisher and the author be liable for any loss of profit or any other commercial damage caused or alleged to have been caused directly or indirectly by this document.

Versie 1.0.3 geproduceerd op: Januari 2023 in Nieuw-Venep.

Uitgever

inepro

Productie

inepro

Inhoudsopgave

Ricoh installatie via WIM

4

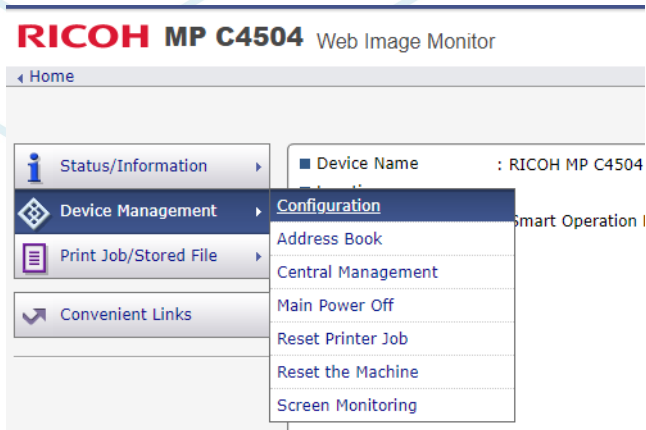


Ricoh installatie via WIM

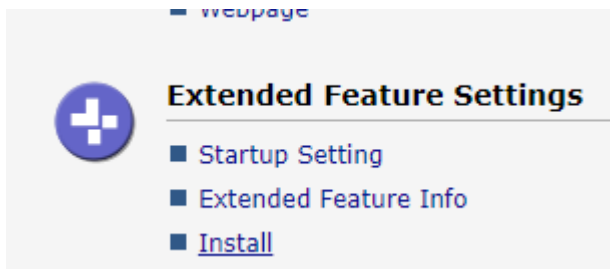
Ricoh installatie van KUARIO MFP KIOSK via WIM

Stap 1: Ga naar de Web Image Monitor (WIM) van de printer en log in als Administrator

Stap 2: Ga naar Device Management en klik op Configuration

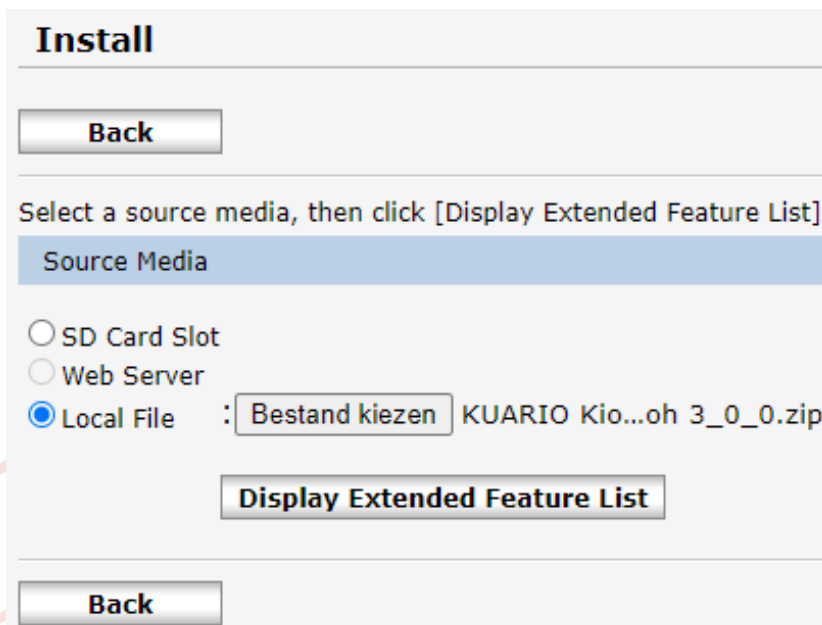


Stap 3: Ga naar Extended Feature Settings en klik op Install



Stap 4: Selecteer Local File en voeg de KUARIO MFP Kiosk als .zip toe.

Stap 5: Klik op Display Extended Feature List (het lijkt alsof er niks gebeurt, maar het laden kan soms een geruime tijd duren).



Stap 6: Als stap 4 klaar is met laden krijg je het onderstaande scherm. Klik op het bolletje van de KUARIO MFP Kiosk en klik op Install.

Install

Back

Select a source media, then click [Display Extended Feature List].

Source Media

SD Card Slot
 Web Server
 Local File : Bestand kiezen | Geen bestand gekozen

Display Extended Feature List

Installation Target Setting

■ Install to : Device HDD

Type-J Setting

■ Auto Start : On Off

Extended Feature List

↓ Install

1/1

Total Applications:1					
	Extended Feature Name	Type	Description	Version	Source Media
<input checked="" type="radio"/>	KUARIO Kiosk	SOP	KUARIO MFP Kiosk self-service app	3.0.0	Local File

Back

Stap 6: Bevestig dat je de KUARIO MFP Kiosk wilt installeren door op OK te klikken.

Install

i Confirm

The following extended feature will be installed.

- Extended Feature Name : KUARIO Kiosk
- Description : KUARIO MFP Kiosk self-service app
- Version : 3.0.0
- Product ID : 1661403149
- Startup Location : ---
- Vendor : KUARIO
- Contact
- TEL : +31-252 744 044
- Fax : +31-252 744 044
- Email : info@kuario.com

OK **Cancel**

i Confirm

Installing the extended feature.

- KUARIO Kiosk

Stap 7: Het scherm gaat automatisch terug naar het onderstaande scherm.

Install

Back

Select a source media, then click [Display Extended Feature List].

Source Media

SD Card Slot
 Web Server
 Local File : **Bestand kiezen** Geen bestand gekozen

Display Extended Feature List

Installation Target Setting

■ Install to : Device HDD ▾

Type-J Setting

■ Auto Start : On Off

Extended Feature List

↓ Install

1/1

Total Applications:0

Extended Feature Name	Type	Description	Version	Source Media
-----------------------	------	-------------	---------	--------------

Back

De installatie is nu voltooid.

